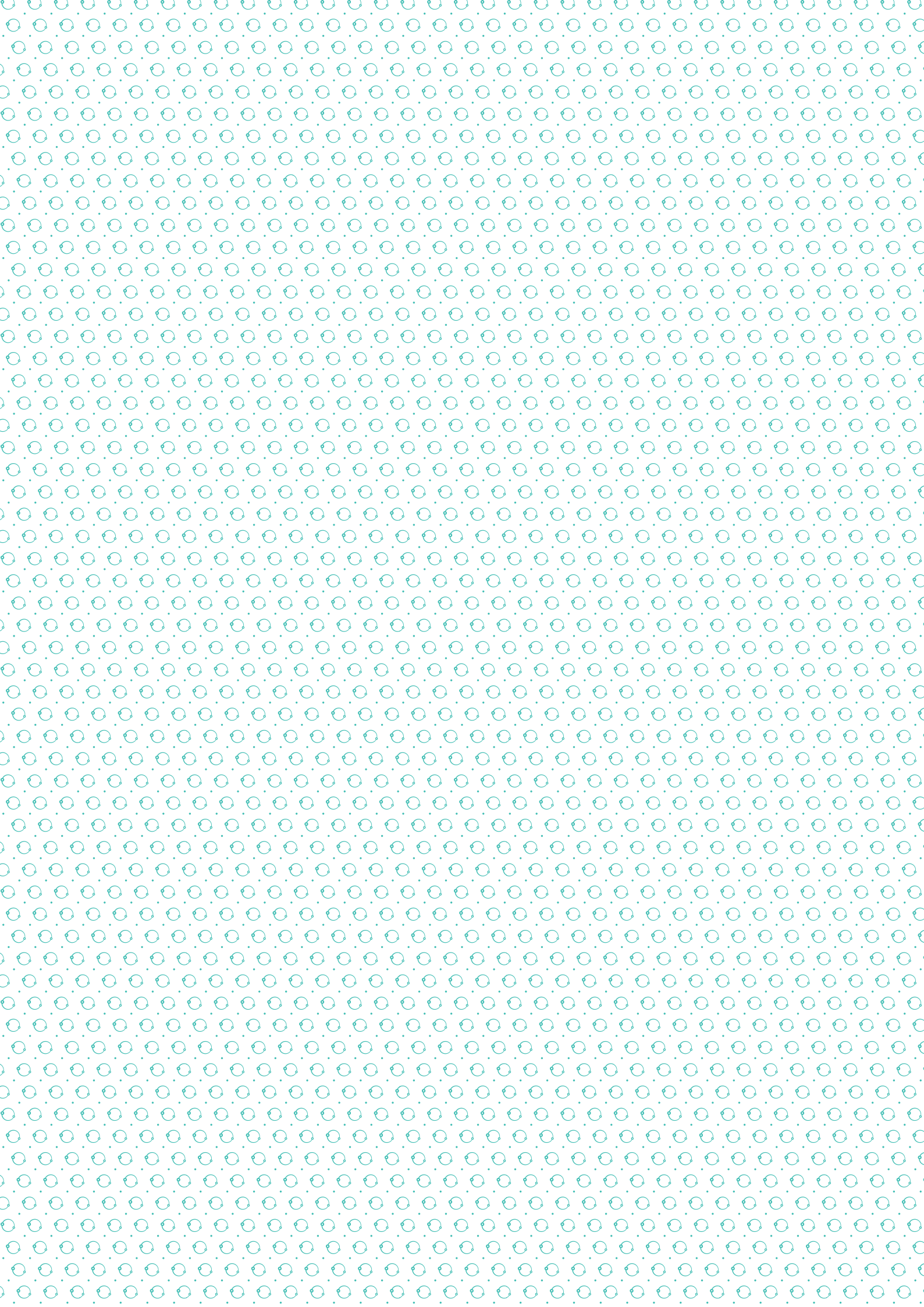


# ROBUS<sup>®</sup>



**ROBUS**  
connect



**ROBUS** introduces...



## Contents

---

**02**

### **INTRODUCTION**

Hello, welcome to **ROBUS** Connect.

**03**

### **HOW IT CONNECTS**

Good question.

**04**

### **THE BENEFITS**

Cut to the chase, what's in it for me?

**06**

### **CLOUD CONNECTION**

You'll be surprised at what you can do.

**08**

### **VEGAS CONNECT**

ROBUS Connect Flexi-Strip.

**12**

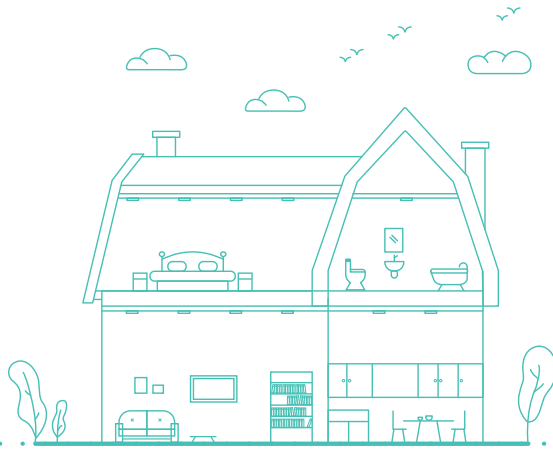
### **ULTIMUM CONNECT**

ROBUS Connect Downlight.

**11**

### **USING THE APP**

ROBUS Connect App.



## Hello, welcome to ROBUS Connect.

**ROBUS CONNECT** is a cloud based smart home system that transforms the way you interact with the lighting in your home or office. By using Wi-Fi or mobile data, you can fully control any light with the touch of a button. **ROBUS CONNECT** compatible products will work without the need for a hub. This range of compatible products will be expanding over the coming months.

## This new Range epitomises our ROBUS Brand Values...



### Accountability

The **ROBUS** Connect cloud platform is certified for information storage, security and protection of personal data in the cloud (ISO27001, ISO27017 and ISO27018) and GDPR compliant. Your data is safe with us.



### Empowerment

We are putting the power in your hands to take control of your home to make it work in a way that suits you.



### Ambition

The **ROBUS** Connect range will expand to over the coming months to include everything you need to create and automated, connected lifestyle.



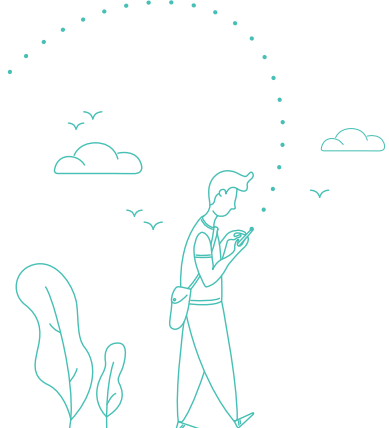
### Fast Pace

Always on connectivity to the cloud with no hub required gives fast installation with instant control of your devices.



### Customer Focus

The **ROBUS** Connect ecosystem is designed with the customer in mind. From easy installation and control to easy to setup automated routines.





# How it connects

**1**

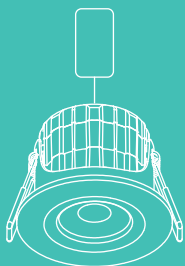
Download the **ROBUS** Connect app from the Apple App Store or Google Play.

**2**

Put your device in pairing mode by turning on and off 3 times in 10 seconds.

**3**

Press “+” in the app and follow the step by step instructions in the app.

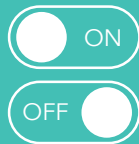


**Yes, it's really that simple.**

# The Benefits

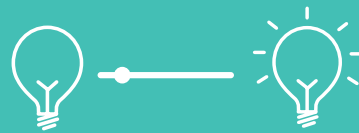


## Let's start with the essentials...



### ON/OFF

Wouldn't it be so much cooler if you could turn your lights on and off using your smart phone? Well, with **ROBUS** Connect you can.



### DIMMING

Control how bright your lights are at any time.



### COLOUR SELECT

Choose from a range of white colour temperatures and any other colour imaginable using your smartphone.



### GROUPING

Group the lights positioned over your breakfast bar in the kitchen or group lights in your hall with those in your bathroom so you can light the way for your kids during the night.



### MULTI-USER

**ROBUS** Connect lets everyone in the household have control as long as they have internet connection.

## and the nice to haves...



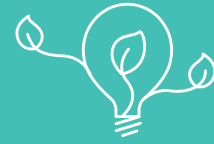
### MULTI-LOCATION

As long as you have an internet connection, you can have complete control of your light fittings from anywhere.



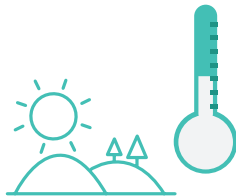
### SCHEDULES

You can set timers for all the **ROBUS** Connect light fittings in your home. Set them to come on when you usually get back from work or to turn off when you leave in the morning.



### ENERGY SAVING

Controlling and/or scheduling your light fittings will ensure that all of your lights not using power unnecessarily when not at home.



### AUTOMATION

Allow your light fittings to respond automatically to scenarios. Set your lights to react to certain environmental conditions (temperature, humidity, sunrise etc.).



### SET THE SCENE

Set the scene you want in your home or room. You can customise your own scenes. Once you have a lighting sequence that you are happy with you can save it in the **ROBUS** Connect App as a Scene, e.g. 'Wake Up', 'Chill Time', 'Homework', 'Movie Night'.

## ...finish with infinite possibilities!



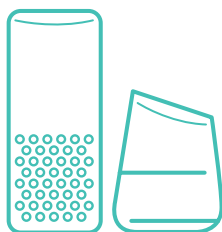
### USE WITH THE CLOUD

You can link your **ROBUS** Connect light fittings with other cloud services, Google Home, Alexa or via IFTTT to open your smart home lighting system for infinite possibilities.





# Cloud Connection



## ALEXA & GOOGLE HOME

**ROBUS** Connect is compatible with Amazon Alexa and Google Assistant. Just search for **ROBUS** Connect in your Alexa or Google Home companion app. This allows you to:



### GROUP OTHER CLOUD-BASED DEVICES

If you own other alexa or google assistant smart products you can use them alongside your **ROBUS** Connect devices.

### USE VOICE CONTROL

"Hey Google, set my **ROBUS** downlights to warm white" or "Alexa, set my **ROBUS** Flexi-strip to red".



## IFTTT (If This Then That)

This free platform helps you achieve more from your devices and cloud services. IFTTT links with a huge number of services to create endless possibilities. You could:



Turn lights on when your smart thermostat detects that you're home.

Turn porch lights on when your connected security system turns on.



Turn up your room thermostat when the lights are turned on.

Flash your LED strip blue when you get a work email.



**Turn  
lights on.**

“

**Turn on all  
downstairs lights.**

**Set the  
scene for  
movie  
night  
in the  
living  
room.**

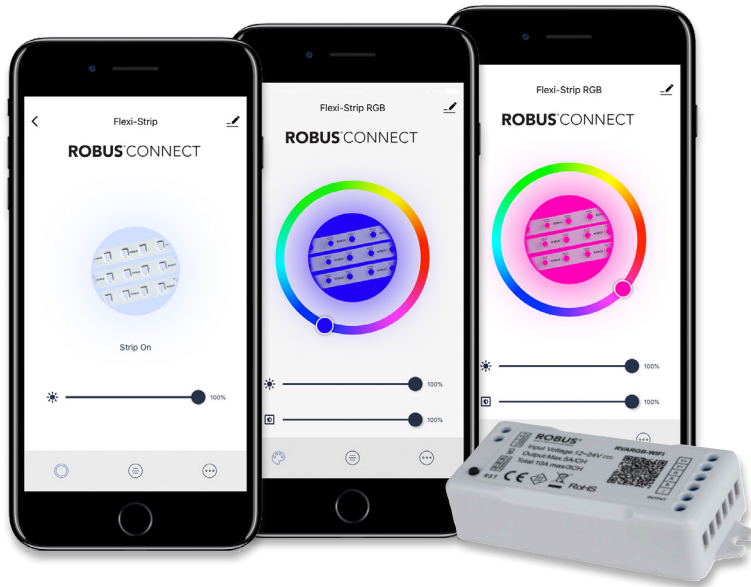
**Set my ROBUS  
Flexi-strip lights  
to blue in the  
games room.**

“

**Set my ROBUS  
Ultimum Downlights  
in the kitchen to  
warm white.**

“





## VEGAS CONNECT

240W, IP20, SINGLE COLOUR, RGB & RGBW

### FEATURES & BENEFITS

#### SINGLE COLOUR

- Single Colour and dimming controller
- Use with VEGAS range of drivers
- Voltage: 12-24VDC
- Current: 10A x 1 Channel



#### RGB

- Colour changing and dimming RGB controller
- Use with VEGAS range of drivers
- Voltage: 12-24VDC
- Current: 5A x 3 Channel – Max: 10A



#### RGBW

- Colour changing and dimming RGBW controller
- Use with VEGAS range of drivers
- Voltage: 12-24VDC
- Current: 5A x 4 Channel – Max: 10A



### RVACCT1-WIFI, RVARGB-WIFI & RVARGBW-WIFI

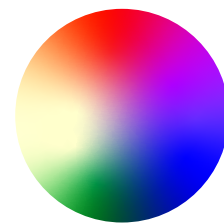
Total Power (W)	IP rated enclosure available	Lifetime (hrs)	Weight (kg)	Colour	IP	Connection mode
240	✓	30,000	0.15	Single Colour, RGB & RGBW	20	Common anode



Tunable White



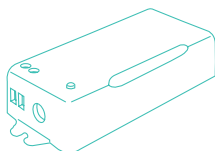
RGB



RGBW

### DIMENSIONS

Width  
45mm  
Depth  
23mm  
Length  
85mm



### INSTALLATION

Input:  
DC12/24V





# ULTIMUM CONNECT

## 7W, IP65, TUNABLE FIRE RATED DOWNLIGHT

### FEATURES & BENEFITS

- Colour temperature selectable through WiFi connection allows selection between 2700-6500K
- Wide operating ambient temperature range of -20°C to +40°C
- Designed and tested to retain the integrity of 30, 60 and 90 minute fire rated ceilings – compliant with Building Regulations Parts B, C and E



RUL070WIFI-01							
Total Power (W)	Total Light Output (lm)	Lifetime (hrs)	Lux at 1m (lux)	Beam Angel (deg)	CCT (K)	IP	Power Factor (PF)
7.1 - 7.3	550 - 630	30,000	290 - 330	60	2700 - 6500	65	0.9



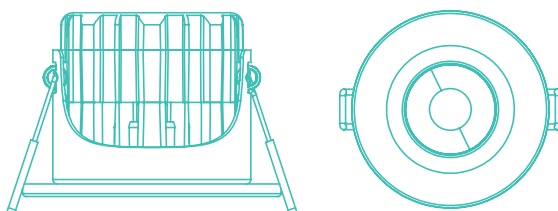
2700K



6500K

### DIMENSIONS

Cut-out  
72mm  
Depth  
60mm  
Diameter  
85mm



### ACCESSORIES

Chrome, Brushed Chrome and Black trims available



## Schedule your lights to turn on & off while away.



43% (approximately 28 million) of us leave a light on when we go on holiday to deter potential burglars. What we often don't consider is the implication of this in terms of cost.

Men are more than twice as likely to leave lights on than women when going to work (31% compared to just 14%).



However, women are more likely to leave the lights on overnight.



## Control your lights from any location.

## Give all your family members access to the app.



**Millennials are the worst offenders when it comes to leaving the lights on.**

In fact, 32% of those in the 18-24 group admit to leaving the lights on when not at home, compared to only 12% of those in the 55+ range.



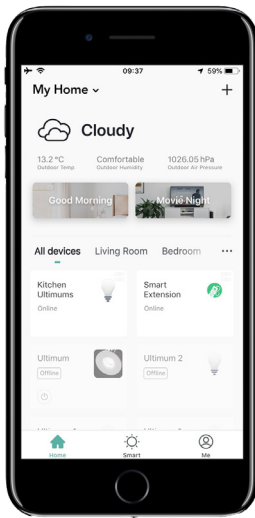
The bathroom is the main room where people accidentally leave on the lights, resulting in 161.28kg in CO<sub>2</sub> emissions.

## Always know what lights are on in your house.



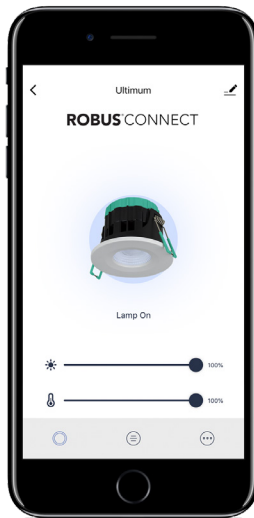
Above information taken from a 2018 study from Utility Design

# The App



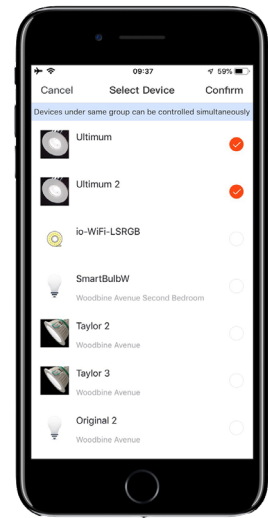
## HOME

Navigate the app from your home screen.



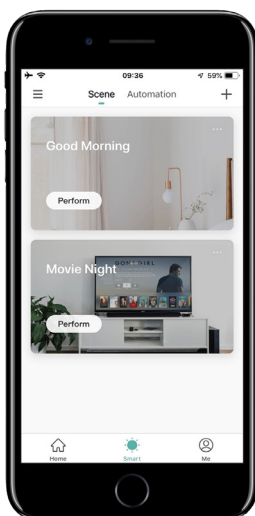
## ADJUST LIGHTS

Change light settings using a simple interface.



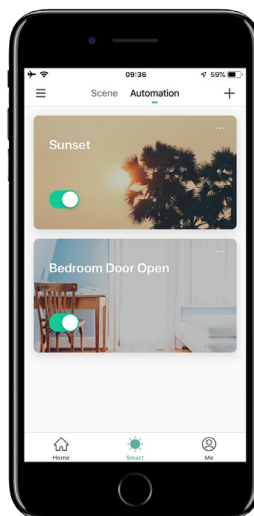
## GROUP DEVICES

Control multiple devices from one screen.



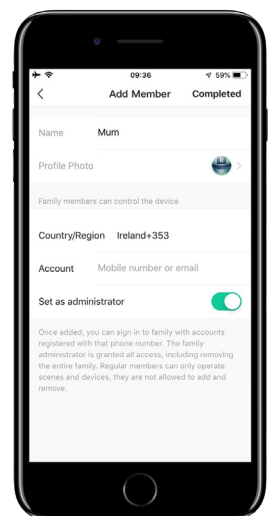
## SCENE

Set actions to happen at the touch of a button.



## AUTOMATION

Set actions to happen automatically.



## MULTI-USER

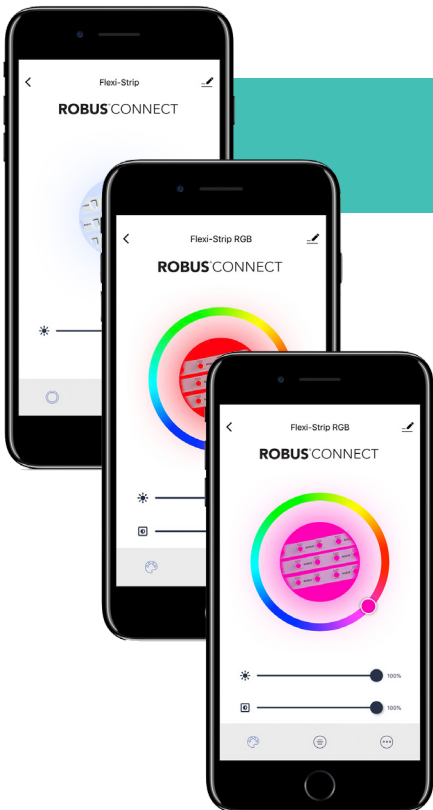
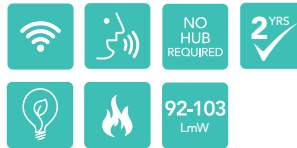
Add multiple users to your home.

# Coming soon...



## GLS CONNECT 8W TUNABLE LAMP

- Colour temperature selectable through WiFi connection allows selection between 2700-6500K
- Die cast aluminium, plastic coated housing with polycarbonate diffuser
- Wide operating ambient temperature range of -20°C to +40°C



## PULSE CONNECT 96W, IP20, SINGLE COLOUR, RGB & RGBW

### SINGLE COLOUR

- Single Colour and dimming controller
- Use with standard PULSE kit
- Voltage: 12-24VDC
- Current: Max: 4A



### RGB

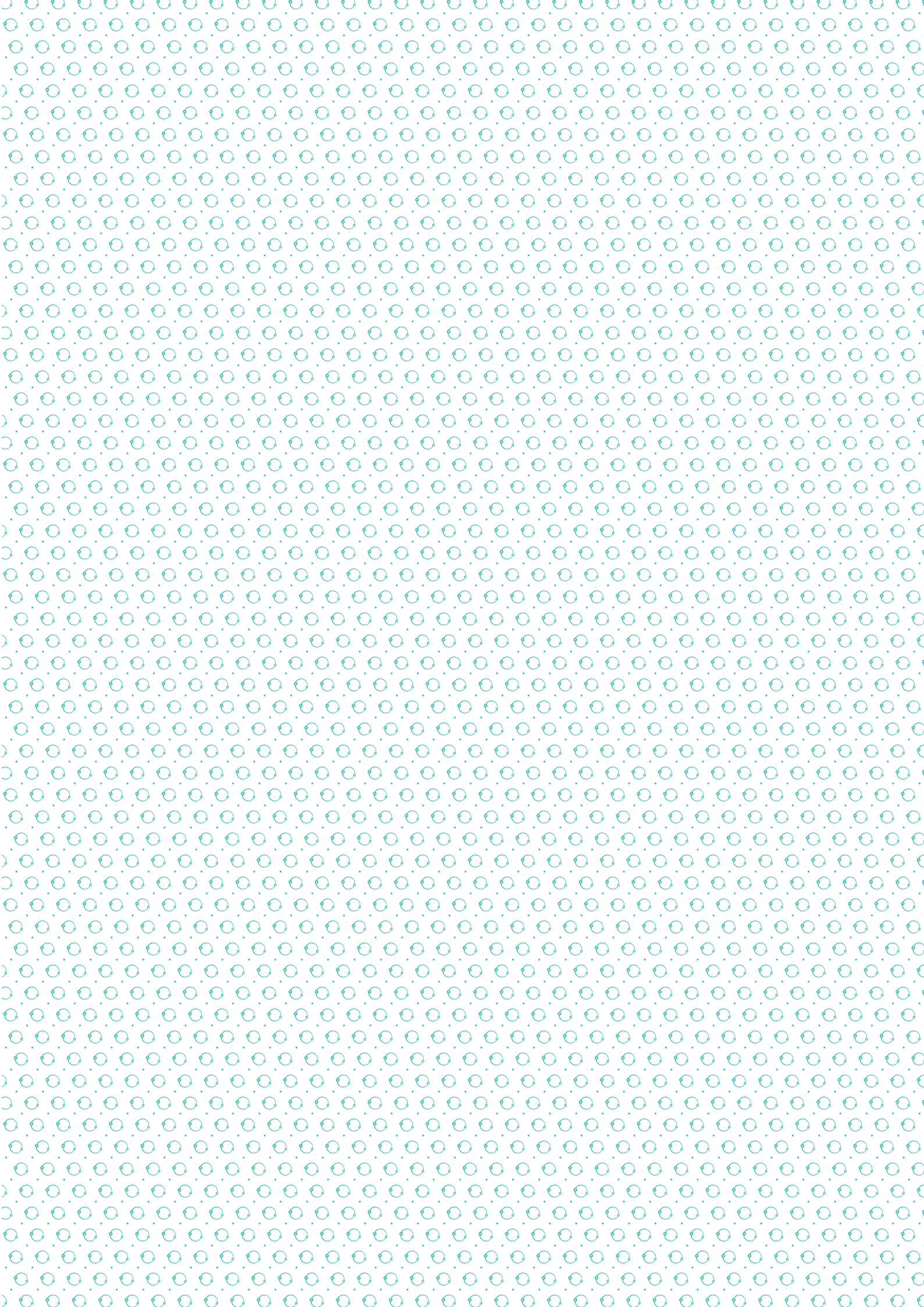
- Colour changing and dimming RGB controller
- Use with standard PULSE kit
- Voltage: 12-24VDC
- Current: Max: 4A



### RGBW

- Colour changing and dimming RGBW controller
- Use with standard PULSE kit
- Voltage: 12-24VDC
- Current: Max: 4A







**ROBUS**  
T. +353 1 709 9000  
F. +353 1 7099060  
E. [INFO@ROBUS.COM](mailto:INFO@ROBUS.COM)  
[ROBUS.COM](http://ROBUS.COM)  
[ROBUSDIRECT.COM](http://ROBUSDIRECT.COM)

**TRUST**  
**ROBUS®**

**LED GROUP** EUROPE · AUSTRALIA · ASIA · MIDDLE EAST · AFRICA