

EZ-FIT CABLE TRAY & ACCESSORIES

Classification of trays varies as light, medium and high duty. The system is interconnected using locking screws and serrated nuts. To ensure continuity these should be tightened on site to torque values.

Features

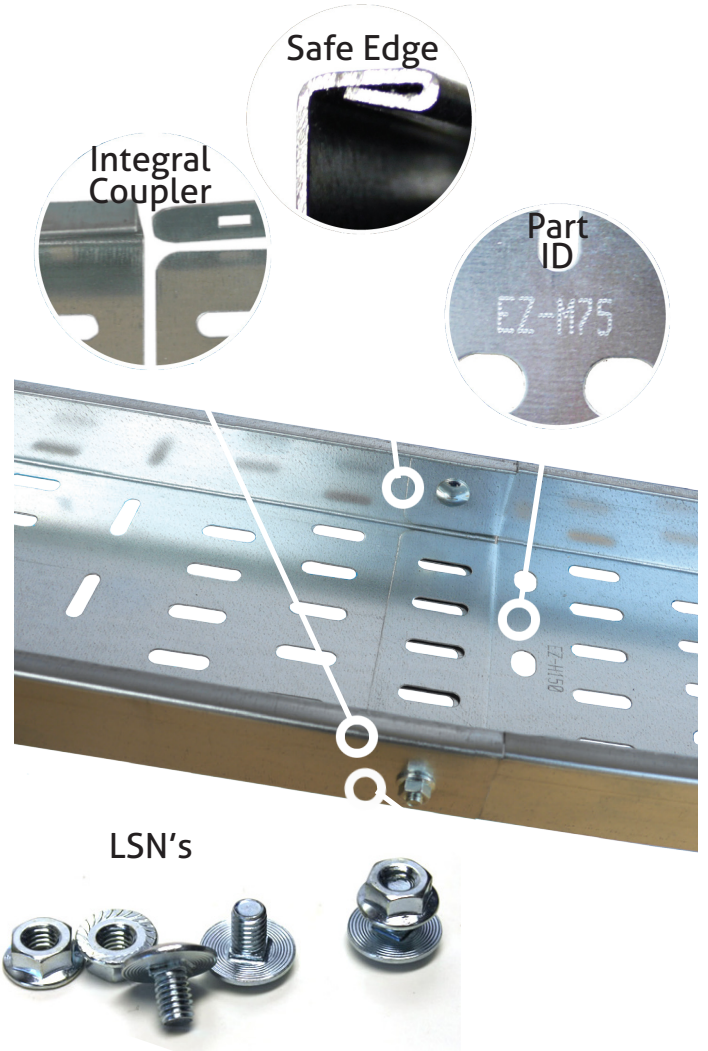
- Returned Safe-Edge Bodies
- Integral Couplers & Fish Plate
- Only 2 Fastenings needed for Quick Coupling
- Possibility to Torque Guarantees Electrical Continuity
- Part Number ID

Specifications

- Manufactured to I.S. EN 61537:2007
- Material Hot Dip Galvanised to EN 10346:2015
- High LEED Certification Rating

Benefits

- Competitive Price, High Quality
- Ex-Factory Service
- Quick Install Design
- Specials Available
- BIM Drawings Available
- Made and Stocked in Ireland



Specifications

Material: EN 10327 Grade DX5 1D Z275; Continuously hot-dip zinc coated low carbon steel sheet.

System manufactured to EN.61537:2007.

Classification (Section 6) as follows:

6.1	Metallic System component		
6.2	Non-Flame propagating		
6.3	According to electrical continuity Characteristics:		
6.4	CTS with electrical continuity; Max linear Imp. 1.00 M.ohm per metre Continuity tests carried out by independent test centre		
6.5	Resistance against corrosion according to class 4 Table 1		
6.6	Temperature tested : Table 2 Min. (Storage) -25°C	Table 3 Max +15°C	
	Table 2 Min (Installation) +15°C	Table 3 +15°C	
	Table 3 Min (Application) +30°C	Table 3 +40°C	
6.7	Perforation base area Classification Class B 2% - 15%		
6.9	Impact tested to 2.0J	CTS without insulating characteristic	
7.1	Marking: All parts are indelibly engraved with identification		
9.1	Construction: All bodies are produced with returned 'safe' edges		
9.3	Mechanical connections. The system is interconnected using locking screws and serrated nuts. To ensure continuity these should be tightened on site to torque values.		

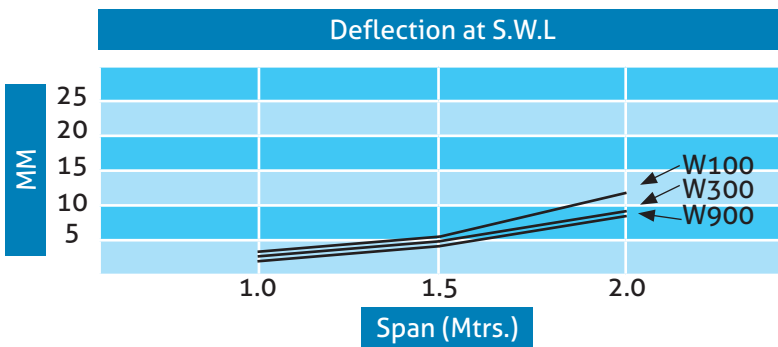
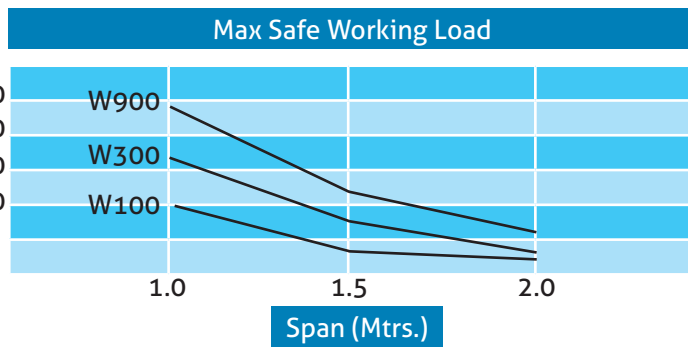
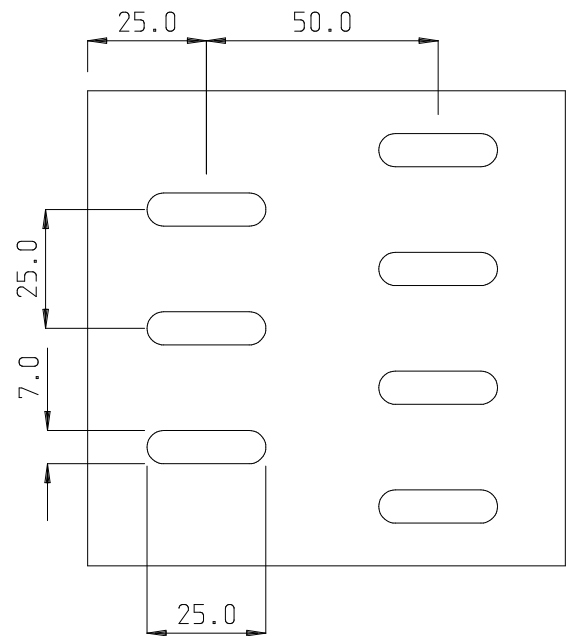
EZ-FIT Cable Tray Technical Information



Loading Data for Medium Tray

Load charts are to be used as a guide line only. Metalfast accepts no liability in the event of different performance under site conditions. It is the responsibility of the installer to ensure the tray is supported adequately to take the load supplied.

Perforation Pattern (mm)



Width	Light Duty	Gauge	Code
50mm	25mm straight edge	0.7mm	LT-50

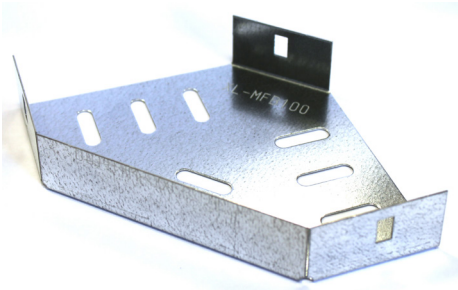
Width	Heavy Duty	Gauge	Code
50mm	50mm return flange	0.7mm	HTX50
75mm	50mm return flange	0.7mm	HTX75
100mm	50mm return flange	0.7mm	HTX100
150mm	50mm return flange	0.7mm	HTX150
225mm	50mm return flange	0.7mm	HTX225
300mm	50mm return flange	1.0mm	HTX300
450mm	50mm return flange	1.0mm	HTX450
600mm	50mm return flange	1.0mm	HTX600

Width	Medium Duty	Gauge	Code
50mm	25mm return flange	0.7mm	MTX50
75mm	25mm return flange	0.7mm	MTX75
100mm	25mm return flange	0.7mm	MTX100
150mm	25mm return flange	0.7mm	MTX150
225mm	25mm return flange	0.7mm	MTX225
300mm	25mm return flange	1.0mm	MTX300
450mm	25mm return flange	1.0mm	MTX450
600mm	25mm return flange	1.0mm	MTX600

EZ-FIT Cable Tray System (inc. couplers)

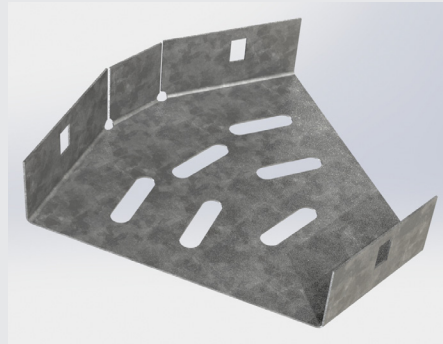
Flat 90° Bend

Medium (mm)	Heavy (mm)
MFB50 (50)	HFB50 (50)
MFB75 (75)	HFB75 (75)
MFB100 (100)	HFB100 (100)
MFB150 (150)	HFB150 (150)
MFB225 (225)	HFB225 (225)
MFB300 (300)	HFB300 (300)
MFB450 (450)	HFB450 (450)
MFB600 (600)	HFB600 (600)



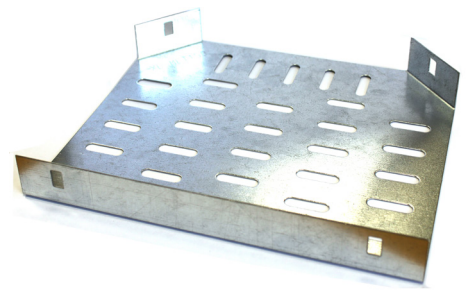
Flat 45° Bend

Medium (mm)	Heavy (mm)
MHB50 (50)	HHB50 (50)
MHB75 (75)	HHB75 (75)
MHB100 (100)	HHB100 (100)
MHB150 (150)	HHB150 (150)
MHB225 (225)	HHB225 (225)
MHB300 (300)	HHB300 (300)
MHB450 (450)	HHB450 (450)
MHB600 (600)	HHB600 (600)



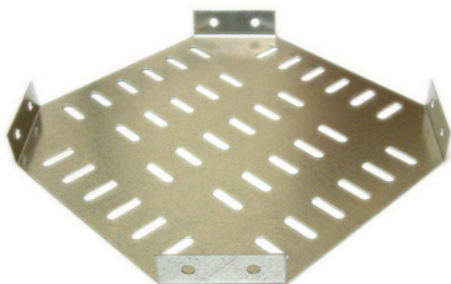
Equal Tee

Medium (mm)	Heavy (mm)
MET50 (50)	HET50 (50)
MET75 (75)	HET75 (75)
MET100 (100)	HET100 (100)
MET150 (150)	HET150 (150)
MET225 (225)	HET225 (225)
MET300 (300)	HET300 (300)
MET450 (450)	HET450 (450)
MET600 (600)	HET600 (600)



Intersection

Medium (mm)	Heavy (mm)
MX50 (50)	HX50 (50)
MX75 (75)	HX75 (75)
MX100 (100)	HX100 (100)
MX150 (150)	HX150 (150)
MX225 (225)	HX225 (225)
MX300 (300)	HX300 (300)
MX450 (450)	HX450 (450)
MX600 (600)	HX600 (600)



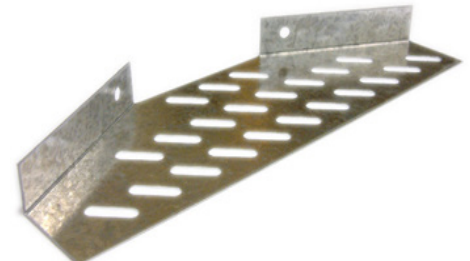
Internal External/ Riser (flexible angle)

Medium (mm)	Heavy (mm)
MRB50 (50)	HRB50 (50)
MRB75 (75)	HRB75 (75)
MRB100 (100)	HRB100 (100)
MRB150 (150)	HRB150 (150)
MRB225 (225)	HRB225 (225)
MRB300 (300)	HRB300 (300)
MRB450 (450)	HRB450 (450)
MRB600 (600)	HRB600 (600)



Reducers

Medium (mm)	Heavy (mm)
MR75 (75)	HR75 (75)
MR100 (100)	HR100 (100)
MR150 (150)	HR150 (150)
MR225 (225)	HR225 (225)
MR300 (300)	HR300 (300)
MR450 (450)	HR450 (450)
MR600 (600)	HR600 (600)



Link Coupler (included with fittings)

