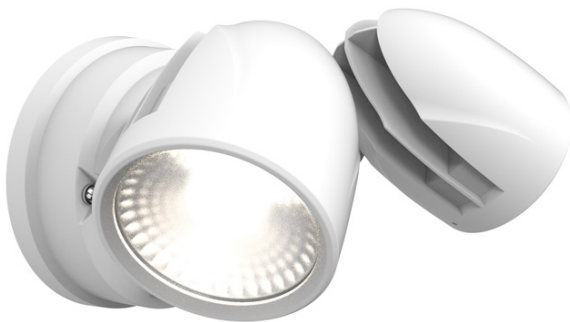




AZEKER/WH



Features

Flexible, compact and economic aluminium LED twin head floodlight suitable for residential applications

Twin adjustable heads provide greater flexibility and coverage

Selectable CCT between 3000K, 4000K and 6000K

PIR versions complete with 8hr manual override facility

Non-dimmable

General Information

Colour / Finish	White
IP Rating	IP65
Class Protection	1
Internal / External	Internal/External
Surface / Recessed / Suspended	Surface
Lifetime (Hrs)	L70 54,000
Warranty (Years)	3
Width (mm)	234
Height (mm)	131
Depth (mm)	180

Technical Information

Wattage	25W
Lumens Delivered	2640lm (4000K)
Lm/W	106lm (4000K)
Beam Angle	90
CRI	Ra 80
CCT	3000K/4000K/6000K
Input	AC220-240V
Hertz	50/60Hz
Operating Temp	-20°C - 45°C
SDCM	6

Datasheet generated from <https://onetimepim.com> last updated Monday, June 27, 2022 8:45:22 AM

